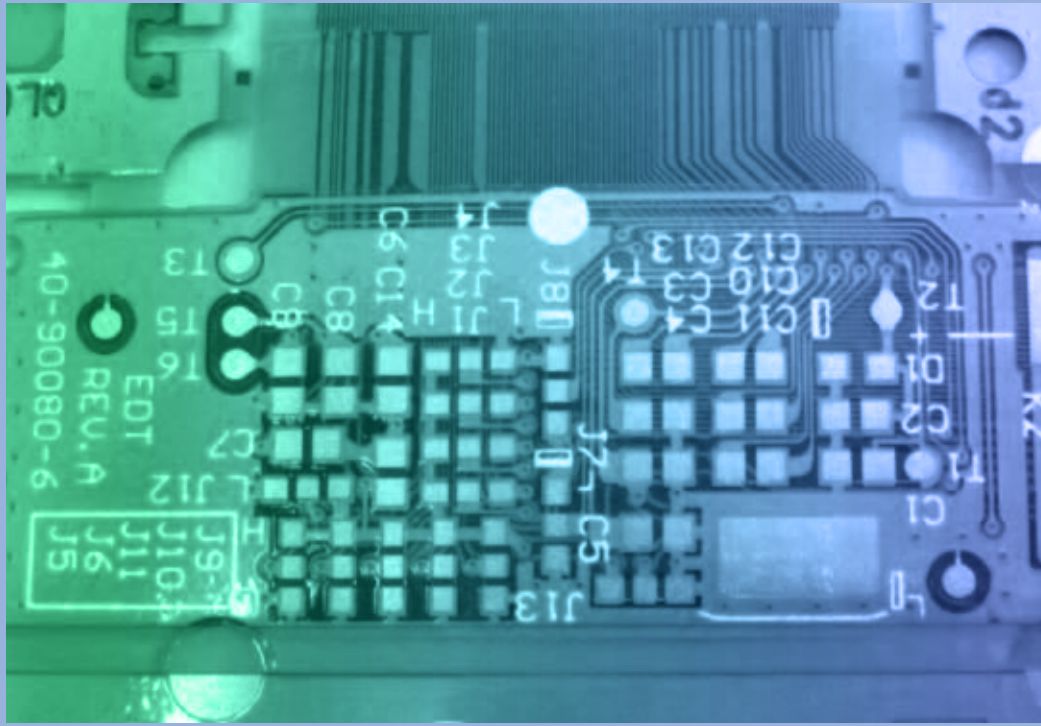


A tiny in-circuit tester with high testing speed and accuracy, the TR5001T provides up to 640 analog test points. Reducing operational costs and saving space, the TR5001T satisfies customer testing needs by offering flexible capabilities.



- ▶ Embedded Digital Signal Processors
- ▶ System features Self-Calibration and Diagnostics
- ▶ 100V High Voltage Current Source
- ▶ High Accuracy Programmable DUT Power Supply
- ▶ TestJet Technology
- ▶ R/L/C Measurement
- ▶ Capacitor Polarity Test
- ▶ Transistor / Diode Measurement
- ▶ Voltage Measurement
- ▶ Sine Wave Generator
- ▶ Frequency Measurement
- ▶ On Board Serial Flash Programming
- ▶ Shop Floor System Support
- ▶ Supports External Instruments

T R 5 0 0 1 T

- AN EVEN MORE COMPACT AND LIGHTWEIGHT ICT
- USB INTERFACE CONNECTS A NOTEBOOK OR A DESKTOP PC
- VOLTAGE / CURRENT / FREQUENCY MEASUREMENT
- 100V HIGH VOLTAGE CURRENT SOURCE FOR LED TESTING



GENERAL

Maximum Analog Test Points: 640
 Windows Compatible PC or Laptop with USB Ports
 Operation System: Microsoft® Windows 7
 Power Requirement: 100-240V auto-switch, 50/60Hz, 3A Max.
 Fixture Type: Press or manual
 Optional: Control box or foot switch

ANALOG HARDWARE

Measurement Switching Matrix: 6-wire measurement

Programmable Frequency: 100Hz, 1KHz, 10KHz, 100KHz
 Programmable DC Voltage Source: 0 ~ +/- 10V, resolution: 10mV
 Programmable DC Current Source: 0 ~ 100mA
 Programmable AC Voltage Source: 0 ~ 10Vpp, resolution: 10mV
 Programmable High Voltage Current Source: Up to 100V/100mA

Component Measurement Capability

Resistance: 40mohm ~ 40Mohm
 Capacitance: 1pF ~ 40mF
 Inductance: 1μH ~ 60H

Analog Measurement

AC Voltmeter: 0 ~ 100Vpp
 DC Voltmeter: 0 ~ ±100V, resolution: 2.5mV ~ 50mV
 DC Ampmeter: 1μA ~ 100mA, resolution: 30nA ~ 30μA



OPTIONAL HARDWARE

Analog Testing

TestJet Technology: Vectorless open circuit detection
 Sine Wave Generator: Frequency range 1 ~ 100KHz, resolution: 1Hz

Digital Testing

Frequency Measurement: Up to 200MHz
 16 Bidirectional Digital Pins:
 Digital Input: Programmable levels 0V to 5V
 Digital Output: Programmable levels 0.8V to 4.2V @20mA
 Pull-up/Pull-down Resistor: 4.7K
 16 General Purpose Relays
 6 DUT Power Supplies:
 (1) 2 Channels fixed with current read-back: +12V @0.3A and -12V @0.3A
 (2) 4 Channels programmable with current read-back:
 Voltage range: 0.8V ~ 20V
 Current range: 0.6A ~ 2A
 Max. power 12W per channel

DIMENSIONS AND WEIGHT

(W) 334mm x (D) 282mm x (H) 174mm (does not include notebook and accessories)
 Weight: 6 ~ 8kg (does not include notebook and accessories)
 Weight will be determined by the system selected

POWERFUL SOFTWARE ENVIRONMENT

Microsoft® Windows7 operating system software
 User-friendly interface
 Auto-learning is on-going to test program generation for opens/shorts tests, clamping diode tests and TestJet tests
 Auto debugging of passive components
 Built-in self-diagnostic functions
 Instantly finds board view display failures for devices and pins
 Shop floor system support
 Supports external instruments

Specifications are subject to change without notice. All trademarks are the property of their owners.

The following are trademarks or registered trademarks of Test Research, Inc. (TRI)



The absence of a product or service name or logo from this list does not constitute a waiver of TRI's trademark or other intellectual property rights concerning that name or logo. All other trademarks and trade names are the property of their owners.

Test Research, Inc.**Headquarters**

7F., No.45, Dexing West Rd.,
 Shilin Dist., Taipei City 11158, Taiwan
 TEL: +886-2-2832-8918
 FAX: +886-2-2831-0567
 E-Mail: sales@tri.com.tw
 http://www.tri.com.tw

Hsinchu, Taiwan

7F., No.47, Guangming 6th Rd., Zhubei
 City, Hsinchu County 30268, Taiwan
 TEL: +886-3-553-9796
 FAX: +886-3-553-9786

USA

500 Laurelwood Road
 Santa Clara, CA
 95054 U.S.A.
 TEL: +1-408-567-9898
 FAX: +1-408-567-9288
 E-mail: triusa@tri.com.tw

Malaysia

C11-1, Ground Floor, Lorong
 Bayan Indah 3 Bay Avenue,
 11900 Bayan Lepas Penang,
 Malaysia
 TEL: +604-6451171
 E-mail: trimy@tri.com.tw

Europe

Lohnerhofstrasse 2
 78467 Konstanz
 Germany
 TEL: +49-7531-361-4235
 FAX: +49-7531-361-5282
 E-mail: trieurope@tri.com.tw

Japan

2-9-9 Midori, Sumida-ku,
 Tokyo, 130-0021 Japan
 TEL: +81-3-6273-0518
 FAX: +81-3-6273-0519
 E-mail: trijp@tri.com.tw

Korea

No.207 Daewoo-Technopia,
 768-1 Wonsi-Dong, Danwon-Gu,
 Ansan City, Gyeonggi-Do, Korea
 TEL: +82-31-470-8858
 FAX: +82-31-470-8859
 E-mail: trikr@tri.com.tw

Shenzhen, China

5F3, Guangxia Road, Shang-mei-
 lin Area, Fu-Tian District, Shenzhen,
 Guangdong, 518049, China
 TEL: +86-755-83112668
 FAX: +86-755-83108177
 E-mail: shenzhen@cn.tri.com.tw

Suzhou, China

63 Huoju Road, Suzhou New
 District, 215009, China
 TEL: +86-512-68250001
 FAX: +86-512-68096639
 E-mail: suzhou@cn.tri.com.tw

Shanghai, China

W. 6F., Building 18, 481 Guiping
 Road, Shanghai, 200233, China
 TEL: +86-21-54270101
 FAX: +86-21-64957923
 E-mail: shanghai@cn.tri.com.tw